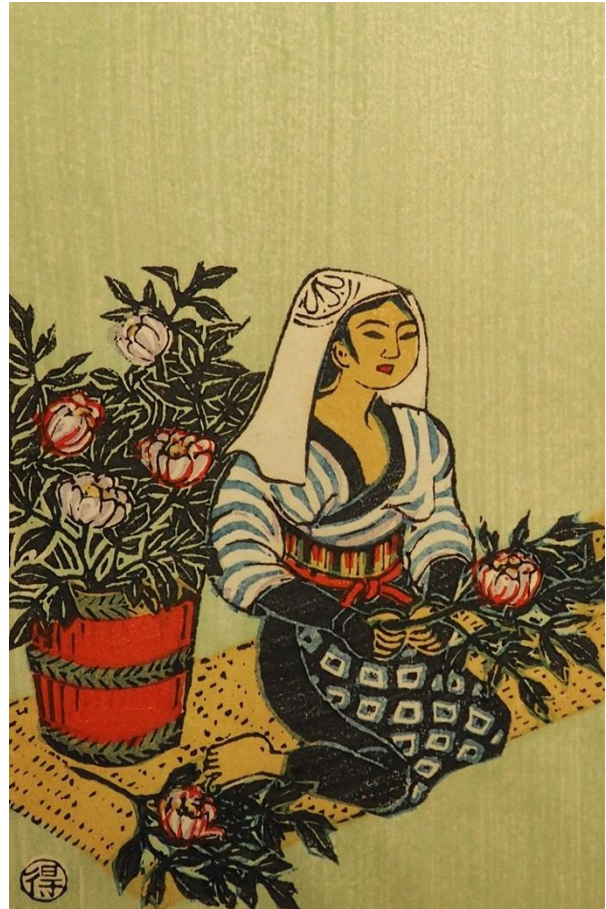


Colorful Flower Printmaking

Create a colorful flower print using techniques as seen in Focus Exhibition: *The Flower Prints of Katsuhira Tokushi*.



Katsuhira Tokushi (Japanese, 1904–1971), *May: Peony*, 1959, woodblock print, ink and color on paper. Private collection

Materials Needed

- pencil
- masking tape
- paper towels
- palette knife
- printmaking brayer
- plastic kitchen spoon
- 9x12" newsprint paper
- 4: 4x6" drawing paper sheets
- 4x6" styrofoam relief plate
- 8x10" plexiglass sheet with taped edges
- black water-soluble relief printmaking ink
- 5: 6x9" various colors construction paper



Optional

- scissors, glue stick, colored pencils, markers



Have time for a [short survey](#)? Let us know how you're enjoying our digital resources!

DAYTON ART INSTITUTE

Step 1

Take a moment to think about the shapes of flowers. Draw some simple flower shapes that you would like to use for your print (ex: daisy, sunflower, tulip, etc.).



Step 2

Take a moment to think about the shapes of flower stems and leaves. Create sketches for a simple floral design featuring both the flowers and flower parts you would like to include.



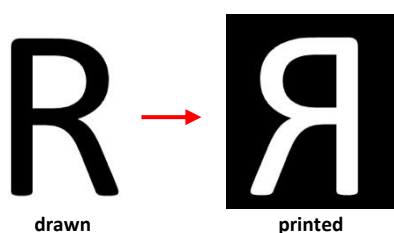
Helpful hint: draw at least 3-5 flowers at varying sizes.

Step 3

Trace a relief plate onto a piece of drawing paper. Select the best floral design from your sketches. Draw the selected design to fit inside the print plate tracing.

Helpful hint: for best results fill the entire plate shape with the design.

Note: drawing will be reversed and inverted when printed.



Step 4

Cut drawing from paper and tape directly onto a relief plate.



drawing on paper



relief plate



Have time for a [short survey](#)? Let us know how you're enjoying our digital resources!

DAYTON ART INSTITUTE

Step 5

Trace over the lines of the drawing with pencil. Press firmly. If needed, use a colored pencil or pen for tracing to best detect areas already traced.

Note: all marks made during this process will be permanently grooved into the plate underneath and cannot be erased.

Note: all lines drawn will be appear white when printed.



Step 6

Remove line drawing from print plate. Redraw lines on print plate as necessary, pressing firmly to ensure all lines are carved deep (if lines cannot be easily felt with a finger, they will need to be carved deeper).

Note: keep pencil very sharp during this stage to ensure fine detail in the print.



Step 7

Shade in all areas later desired to be “open” for color (ex: shade in flower petals so they will later appear the same color as the paper rather than printed black). Press firmly.

Step 8

Use a palette knife to spread a small amount of black printmaking ink onto the plexiglass. Roll ink with brayer until the ink is a smooth and even consistency. Place the print plate on a sheet of newsprint, carved side up. Gently roll inked brayer over the carved side of the print plate until the plate is fully covered with ink.

Note: tape sharp edges of plexiglass before use. Wash ink from plexiglass, brayer, and palette knife with water once finished.

Helpful hint: to ensure brayer is evenly covered with ink, lift it off the plexiglass and re-roll the ink in different directions rather than back and forth in only one direction.

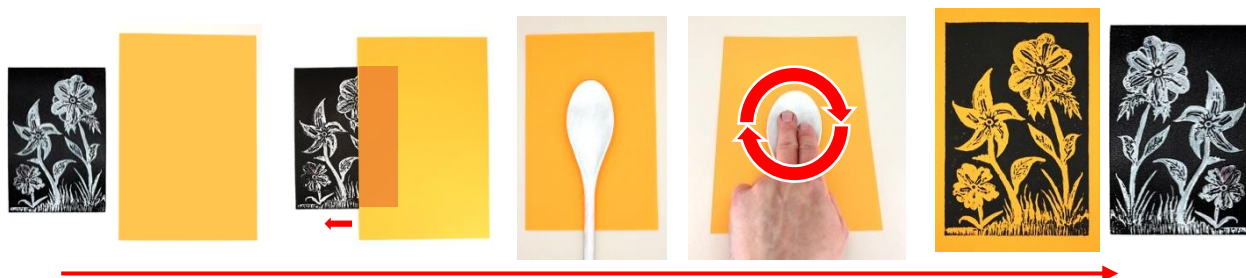


Have time for a [short survey](#)? Let us know how you're enjoying our digital resources!

DAYTON ART INSTITUTE

Step 9

Place a sheet of construction paper directly onto the inked side of the print plate. Print the design by firmly pressing and rubbing the spoon in a circular motion over the entire sheet of paper. For best results, place fingers into the spoon's dish while printing. Gently peel the paper from the print plate to reveal the print. Allow 5-10 min for print to fully dry.



Note: if your print appears **faded**, more ink or rubbing pressure is needed. If print is **blurry** or **too dark**, too much ink may have been applied or paper may have shifted during rubbing process.

Helpful hint: repeat the inking and printing process using different color sheets to create 3-5 additional prints for later experimentation.



Faded



Blurry / too dark

Step 10 (optional)

Cut out flowers from one or more different color prints and glue to other prints for a multi-colored effect.

Helpful hint: use markers or colored pencils to add more color and details to prints if desired.



Resources

[See the styrofoam printmaking process](#)
[The Flower Prints of Katsuhira Tokushi](#)

ARTventures
... at home!

Questions about or ideas for ARTventures? Email edu@daytonart.org

The contents of this document are copyright ©2022 by the Dayton Art Institute, all rights reserved.
This document has been prepared by the DAI Education Department for educational uses only, and any commercial use is prohibited.