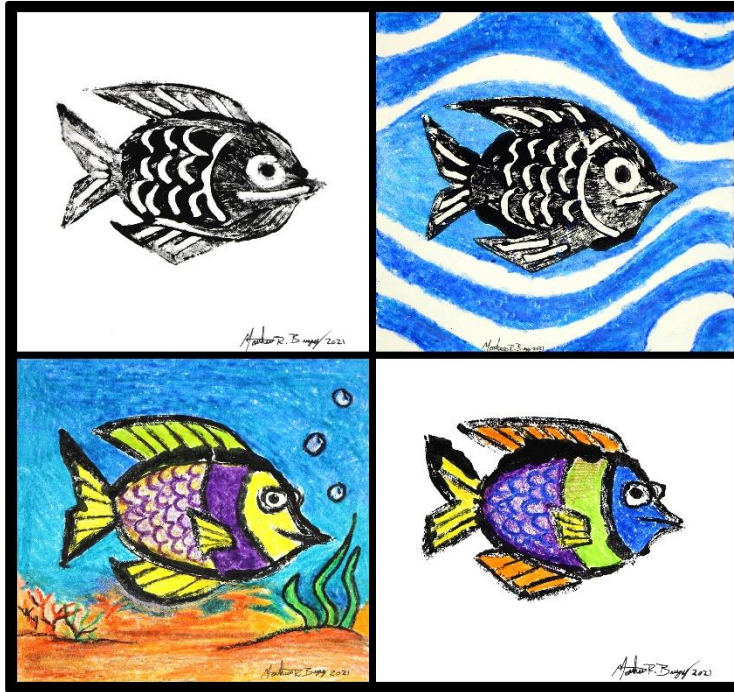


Mixed Media Monotypes

Create painterly prints using painting, printmaking, and drawing techniques inspired by DAI Focus Exhibition, *Beyond the Woodblock*.

ARTventures

... at home!



Nakayama Masami (Japanese, 1898–1979), *Pigeons of the Villa*, 1949, etching. Gift of Mrs. Virginia W. Kettering, 1996.214

Materials Needed

- pencil
- paper towels
- plastic spoon
- q-tips
- bowl for water
- paintbrushes, various sizes
- 9 x 12" newsprint paper
- 8 sheets: 4 x 6" drawing paper
- 8 x 10" plexiglass sheet with taped edges
- black water-soluble printmaking ink

Optional

- crayons
- markers



Have time for a [short survey](#)? Let us know how you're enjoying our digital resources!

DAYTON ART INSTITUTE

Step 1

Take a moment to think about an animal, object, or symbol that interests you (ex: cat, fish, spaceship, heart symbol, etc.). Write a list of several ideas to choose from (8-10 ideas is recommended).

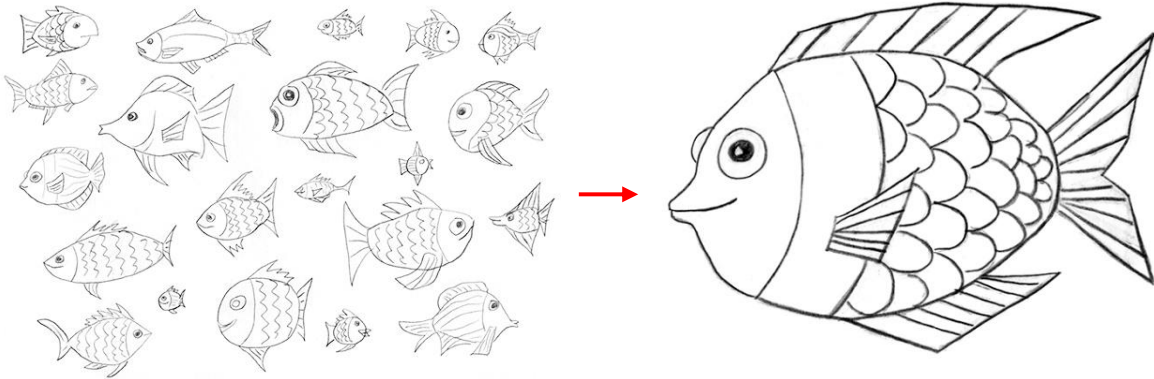
ROBOT
SPACESHIP
MOON
SUN
CAR
AIRPLANE

FISH
TREE
BIRD
CLOUD
LANDSCAPE
STARS

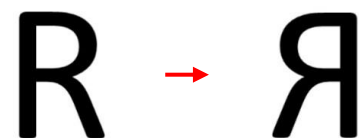
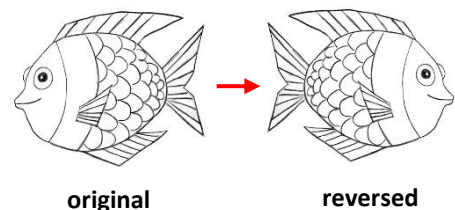
CHEESEBURGER
TACOS
CAT
DOG
COMPUTER
HEART

Step 2

Select one and draw several small sketches of that idea. Use the sketch you like the most and create a final drawing sized as you want it to be printed (ex: full sheet, half sheet, etc.).



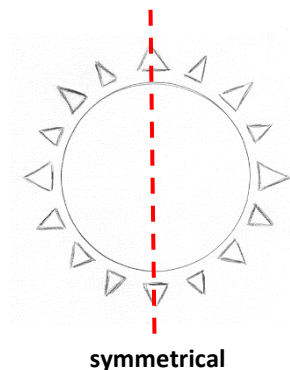
Note: image will be reversed when printed (ex: if your drawn fish faces the left, it will be printed looking to the right). To create a reverse drawing, draw the image as you wish to see it, flip paper over, tape paper to a window, and trace over the drawing. This traced drawing is the reverse image to be used for the print template.



Helpful hint: keep drawings simple with bold lines. Thin, detailed lines may not easily appear in final print.

Helpful hint: create a **symmetrical** drawing (image with identical right and left sides) to avoid image reversal when printed.

Helpful hint: let final drawing be an inspiration for the print, not an exact model. Further experimentation while printing is encouraged.

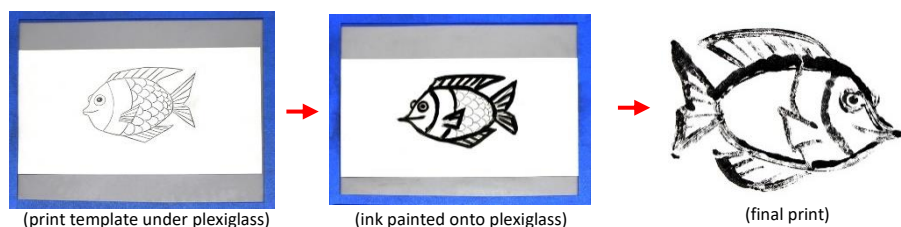


Have time for a [short survey](#)? Let us know how you're enjoying our digital resources!

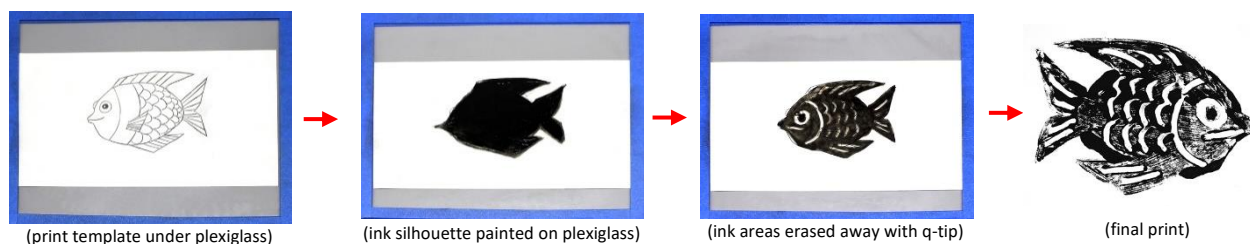
Step 3

Place full size drawing under plexiglass as a print template. Using black printmaking ink and a paint brush, paint your image onto the plexiglass using **additive** or **subtractive** (or a combination of both) monotype printing technique.

For **additive** printing, paint ink onto plexiglass directly over the lines of your print template. It is essentially being traced with ink.



For **subtractive** printing, paint a silhouette of your drawing onto plexiglass, fully filled in with ink. Add details by erasing away areas of ink with a Q-tip. Add more ink and re-erase as needed. For cleanest marks, use a damp Q-tip.

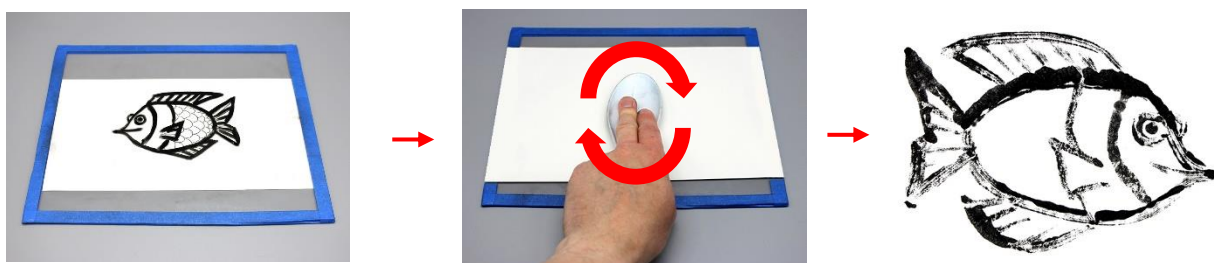


Note: complete the ink painting process quickly (under 1-2 minutes) to prevent ink from drying. Use a lightly dampened brush while painting for smoothest and fastest lines.

Step 4

Place a sheet of paper directly on top of your ink. Rub a spoon over the entire paper, placing fingers inside the dish of the spoon and firmly pressing with a circular motion from edge to edge. Gradually peel the paper away to reveal the printed image.

Note: printed image may vary from ink painting. Experimentation with painting and printing process is crucial to achieve monotype print desired.



DAYTON ART INSTITUTE

Helpful hint: if print appears **blurred**, too much water may have added to the ink or paper may have shifted during printing. Try a new print using less water and keep paper still.



Blurred



Faded

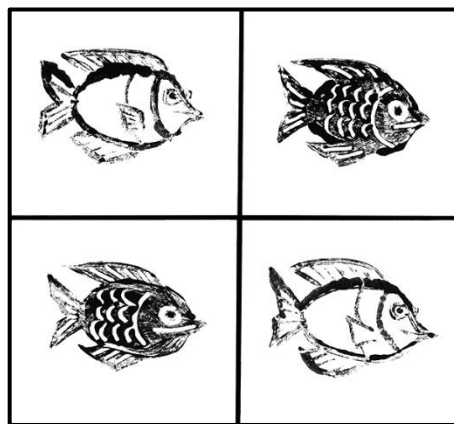
Helpful hint: if print is **faded**, ink may have dried before printing process began. Try another one, painting more quickly or apply more ink to plexiglass with a lightly dampened brush or Q-tip.

Step 5 (optional)

Repeat printing process (steps 3 and 4) to create multiple prints of the image as desired.

Note: all prints will be unique as image needs to be repainted for printing.

Helpful hint: fully clean ink off plexiglass and dry with paper towel between prints. For best results, try a variety of techniques with each new print.



Step 6 (optional)

Allow prints to fully dry and then add color, texture, or backgrounds.



Resources

[Watch an artist create a monotype](#)

[Read about DAI's *Beyond the Woodblock* focus exhibition](#)

ARTventures
... at home!

Questions about or ideas for ARTventures? Email edu@daytonart.org

The contents of this document are copyright ©2021 by the Dayton Art Institute, all rights reserved.
This document has been prepared by the DAI Education Department for educational uses only, and any commercial use is prohibited.